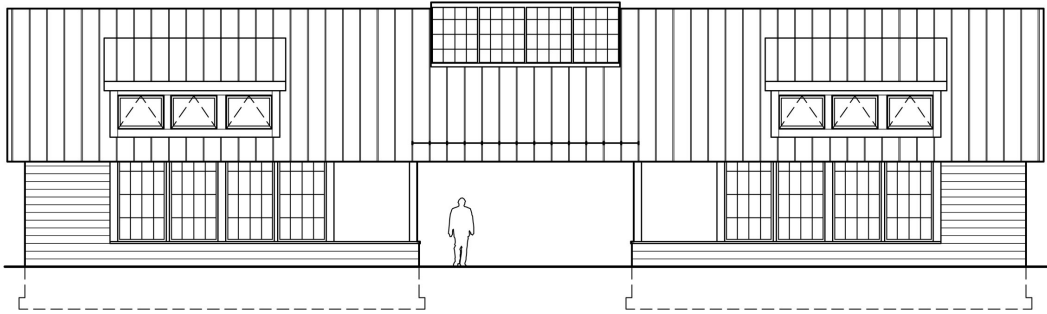


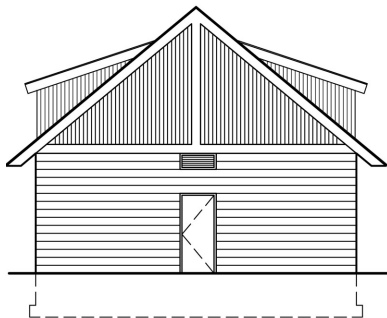
COMFORT STATIONS AT LEHIGH GORGE STATE PARK

PA DEPARTMENT OF GENERAL SERVICES
LUZERNE & CARBON COUNTIES, PA



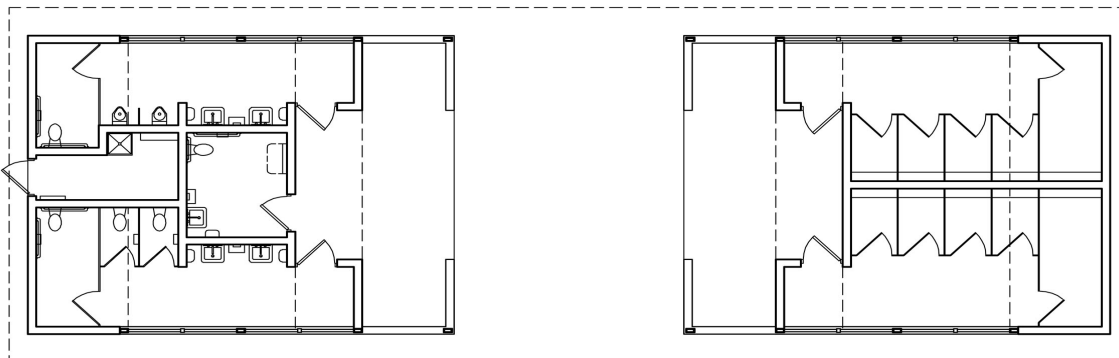
Front Elevation

The Lehigh Gorge State Park consists of 4,548 acres along the Lehigh River in Luzerne and Carbon Counties, PA. The geography is characterized by deep gorges, rock escarpments, thick vegetation, and scenic waterfalls, making the area popular with hikers, joggers, cyclists, and cross-country skiers. CDA&I was responsible for design and documentation of new comfort stations, changing rooms, and wayfinding displays for greenway development along the Lehigh River, with primary trailhead locations at White Haven, PA.



Side Elevation

Working in conjunction with landscape architects, Simone Jaffe Collins, and the PA Department of Conservation and Natural Resources, CDA&I designed comfort stations compatible with the local environment. Building materials include ground-face block walls, cementitious siding painted a woody green, and Pennsylvania slate porches and windowsills specified from local quarries. The architectural design is derived from vernacular buildings of Eastern PA, with generous porch areas for removal of boots, skis, and other gear before entering the changing rooms. Open framing, roofs top-lit from dormer and skylight windows, and the domestic scale of the buildings make them both comfortable and welcoming.



Plan