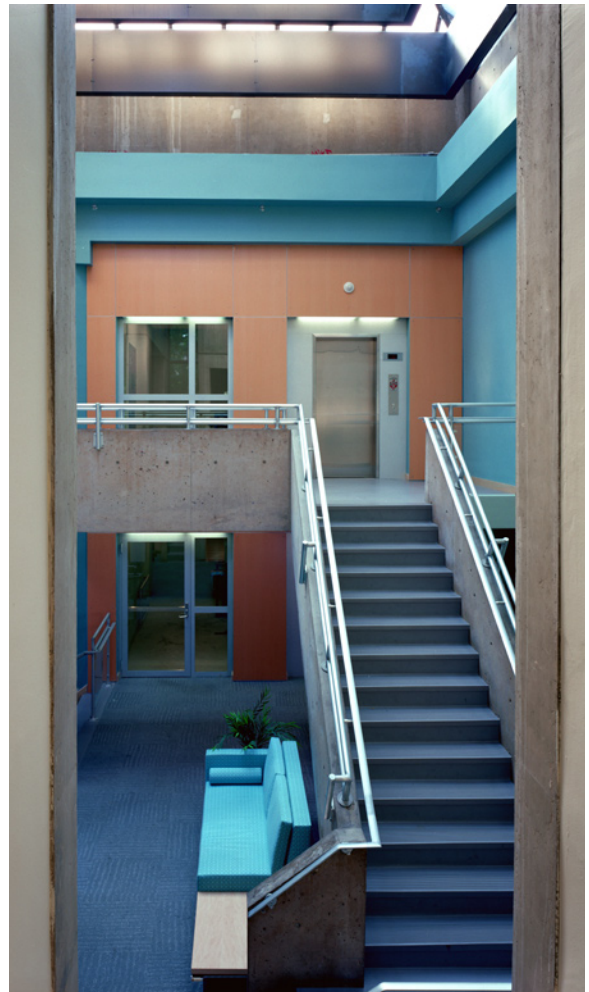


Stouffer Commons Lobby

University of Pennsylvania
Philadelphia, PA



As Phase III of a full building revitalization, a new unified lobby area serves multiple student user groups. Detailed programming, code, and ADA accessibility issues were investigated. The new vertical core unifies three floors while providing handicapped accessibility and emergency egress. Comprehensive interior design included new lighting, flooring, stair railings, and reception desk.

Client Reference

David Hollenberg
University Architect
T: 215.573.9005

4,740sf/\$560,000/2004